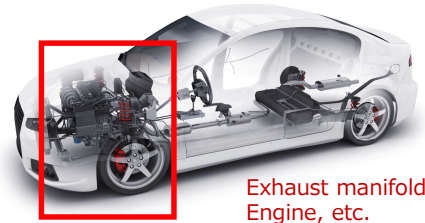


Examples of products used in the  
**automotive**

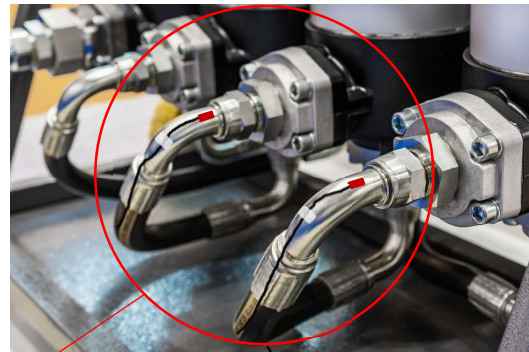
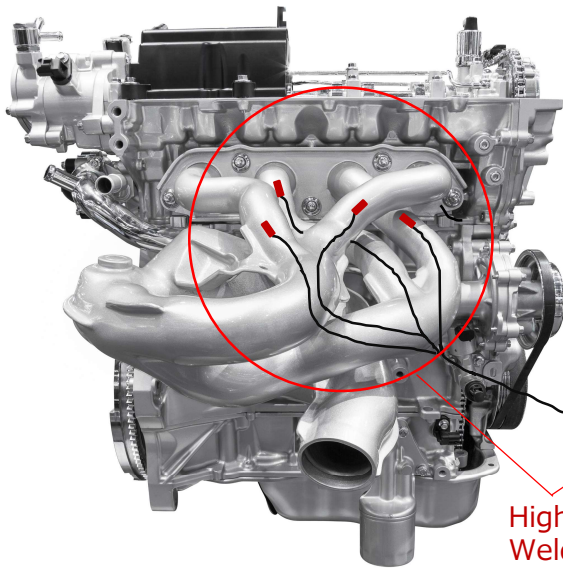


Exhaust manifold  
Engine, etc.

# Stress measurement in high temperature environment

Spot-welding type strain gauges can measure stress in high temperature environments up to 800°C.

To install these strain gauges, we use Spot welder.



High Temperature  
Weldable Strain  
Gauge



Multi-Recorder  
TMR-300  
Series

## [ Product ]

High Temperature Weldable  
Strain Gauge  
AW series  
AWM · AWMD · AWH · AWHU etc.

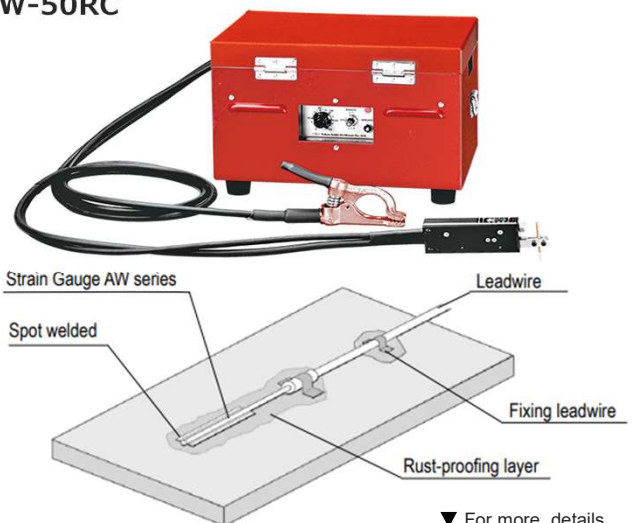


CE



▲ For more details

Spot Welder  
(for installing weldable strain gauges)  
W-50RC



▼ For more details

These products are ideal for measuring stress in high temperature environment, such as exhaust manifold and engine of vehicle.

